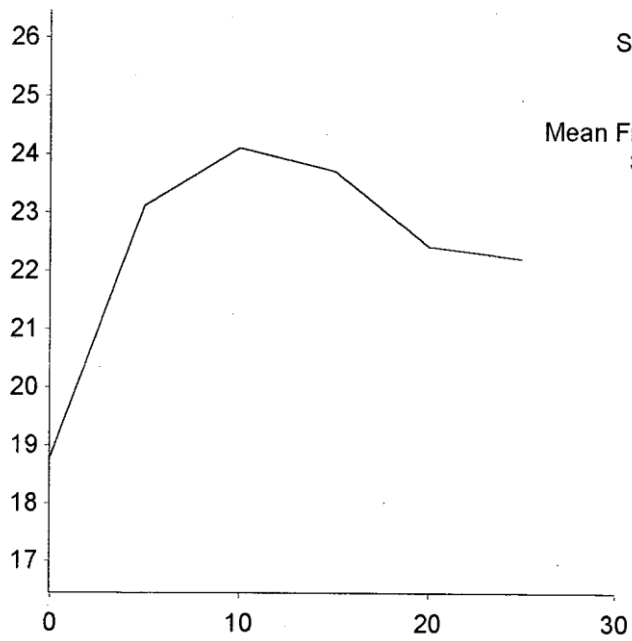


EarTag : Sally
 Micron : 22.3 mic
 SD : 4.0 mic
 CV : 18.1 %
 CEM : 6.9 mic
 <15 : 3.8 %
 CF : 99.2 %
 SF : 21.2 mic
 CRV : 87.0 Dg/mm
 SDC : 53.9 Dg/mm



Staple Len : 30.0 mm
 Min Mic : 18.8 mic
 Max Mic : 24.1 mic
 Mean Fibre Ends : 20.5 mic
 SD Along : 1.90 mic